

●可转位铣削刀片命名规则 Indexable milling inserts code key

S P K N 15 04 E D L - J M

1 2 3 4 5 6 7 8 9

1 形状代号 Insert shape					2 主切削刃后角 Clearance angle of main cutting edge		
A	B	C	D	E	A	B	C
H	K	L	M	O	D	E	F
P	R	S	T	T	G	N	P
		其他 Others			其他的后角 Other clearance angles		
V	W	Z			O		

3 公差 Tolerance										
代号	刀尖高度m 公差(mm)	内接圆ØI.C 公差(mm)	厚度S 公差(mm)	(参考)M级精度详细情况(按形状、大小分)						
				◆刀尖高度公差(mm)						
A	±0.005	±0.025	±0.025	内接圆	正三角形	正方形	80°菱形	55°菱形	35°菱形	圆形
F	±0.005	±0.013	±0.025	6.35	±0.08	±0.08	±0.08	±0.11	±0.16	---
C	±0.013	±0.025	±0.025	9.525	±0.08	±0.08	±0.08	±0.11	±0.16	---
H	±0.013	±0.013	±0.025	12.7	±0.13	±0.13	±0.13	±0.15	---	---
E	±0.025	±0.025	±0.025	15.875	±0.15	±0.15	±0.15	±0.15	±0.18	---
G	±0.025	±0.025	±0.13	19.05	±0.15	±0.15	±0.15	±0.15	±0.18	---
J	±0.005	±0.05±0.13	±0.025	25.4	---	±0.18	±0.18	---	---	---
				◆内接圆ØI.C公差(mm)						
K	±0.013	±0.05±0.13	±0.025	内接圆	正三角形	正方形	80°菱形	55°菱形	35°菱形	圆形
L	±0.025	±0.05±0.13	±0.025	6.35	±0.05	±0.05	±0.05	±0.05	±0.05	---
M	±0.08±0.18	±0.05±0.13	±0.13	9.525	±0.05	±0.05	±0.05	±0.05	±0.05	±0.05
N	±0.08±0.18	±0.05±0.13	±0.025	12.7	±0.08	±0.08	±0.08	±0.08	---	±0.08
U	±0.13±0.38	±0.08±0.25	±0.13	15.875	±0.10	±0.10	±0.10	±0.10	---	±0.10
				19.05	±0.10	±0.10	±0.10	±0.10	---	±0.10
				25.4	---	±0.13	---	---	---	±0.13

4 断屑槽及夹固形式 Chipbreaker and clamping system

代号	有无孔	有无断屑槽	刀片剖面	代号	有无孔	有无断屑槽	刀片剖面
B		无		N		无	
H		单面		R		单面	
C		无		F		双面	
J	有	双面		A		无	
W		无		M	有	单面	
T		单面		G		双面	
Q		无		X	---	---	特殊
U		双面					

6 刀片厚度 Insert thickness

厚度指刀片底面与切削刃最高部分之间的高度。

代号	刀片厚度(mm)
00	0.79
T0	0.99
01	1.59
T1	1.98
02	2.38
T2	2.58
03	3.18
T3	3.97
04	4.76
T4	4.96
05	5.96
T5	5.95
06	6.35
T6	6.75
07	7.94
09	9.52
T9	9.72
11	11.11
12	12.70

5 切削刃长 Length of cutting edge

刀片形状	C	D	R	S	T	V	W
内接圆I.C (mm)	切削刃长度						
3.970	--	--	--	--	06	--	--
5.000	--	--	05	--	--	--	--
5.560	--	--	--	--	09	--	--
6.000	--	--	06	--	--	--	--
6.350	06	07	--	--	11	11	--
8.000	--	--	08	--	--	--	--
9.525	09	11	09	09	16	16	06
10.000	--	--	10	--	--	--	--
12.000	--	--	12	--	--	--	--
12.700	12	15	12	12	22	22	08
15.875	16	--	15	15	27	--	--
16.000	--	19	16	--	--	--	--
19.050	19	--	19	19	33	--	--
20.000	--	--	20	--	--	--	--
25.000	25	25	25	--	--	--	--
25.400	--	--	25	25	--	--	--
31.750	--	--	31	--	--	--	--
32.000	--	--	32	--	--	--	--

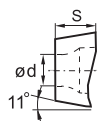
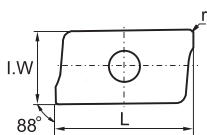
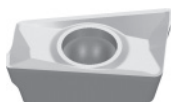
7 修光刃 Wiper

Kr		α _n	
A	45°	A	3°
D	60°	B	5°
E	75°	C	7°
F	85°	D	15°
P	90°	E	20°
Z	其他	F	25°
		G	30°
		N	0°
		P	11°
		Z	其他

8 切削方向 Cutting direction

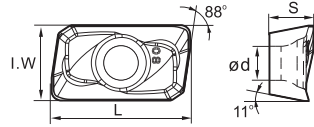
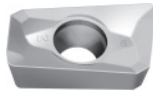
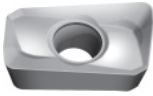
R	右 Right hand
L	左 Left hand
N	双向 Neutral

9 断屑槽型代号 Chipbreaker code



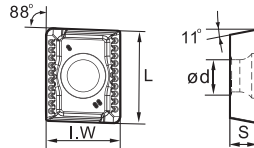
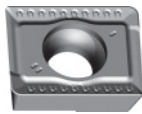
型号 Type	尺寸 Dimensions(mm)					CVD涂层 CVD Coating						PVD涂层 PVD Coating				硬质合金 Cemented carbide			
	L	I.W	S	ød	r	KLT750	KBM720	KBM253	KBM730	KBD125	KBD130	KBG130	KBG202	KBG135	KBG120	KLT330	KLT051	KLT110	KLT120
APKT11T304-MF	12.24	6.5	3.6	2.8	0.4	●	○		○			○	○	○					
APKT11T308-MF	12.24	6.5	3.6	2.8	0.8		○					○	○						
APKT11T312-MF	12.24	6.5	3.6	2.8	1.2								○						
APKT11T316-MF	12.24	6.5	3.6	2.8	1.6								○						
APKT160408-MF	17.877	9.33	5.76	4.4	0.8	●	○		○				○	○					
APKT11T304-M1	12.24	6.5	3.6	2.8	0.4	●	●		●			★	★	★					
APKT11T308-M1	12.24	6.5	3.6	2.8	0.8	●	●		○		★	★	★	★					
APKT11T312-M1	12.24	6.5	3.6	2.8	1.2		○					○	★	○					
APKT11T316-M1	12.24	6.5	3.6	2.8	1.6		○					○	★	○					
APKT160408-M1	17.877	9.33	5.76	4.4	0.8	●	●		●		○	★	★	★					
APKT11T304-MR	12.24	6.5	3.6	2.8	0.4	●	●		●			○	○	○					
APKT11T308-MR	12.24	6.5	3.6	2.8	0.8									○					
APKT11T312-MR	12.24	6.5	3.6	2.8	1.2									○					
APKT11T316-MR	12.24	6.5	3.6	2.8	1.6									○					
APKT160408-MR	17.877	9.33	5.76	4.4	0.8									○					
APKT11T304-LU	12.24	6.5	3.6	2.8	0.4													★	★
APKT11T308-LU	12.24	6.5	3.6	2.8	0.8													★	○
APKT160408-LU	17.877	9.33	5.76	4.4	0.8													★	★

★主推牌号 Recommended grade ●可选牌号 Available grade ○按订单生产 Make-to-order



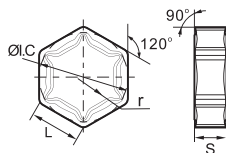
型号 Type	尺寸 Dimensions(mm)					CVD涂层 CVD Coating					PVD涂层 PVD Coating				硬质合金 Cemented carbide						
	L	I.W	S	ød	r	KLT750	KBM720	KBM253	KBM730	KBD125	KBD130	KBG130	KBG202	KBG131	KBG135	KBG120	KLT330	KLT051	KLT110	KLT120	
APMT1135PDR	11.25	6.2	3.5	2.8	0.8		○					○	●	★	○						
APMT160408PDER	17.25	9.25	4.76	4.4	0.8								●	★	○						

★主推牌号 Recommended grade ●可选牌号 Available grade ○按订单生产 Make-to-order



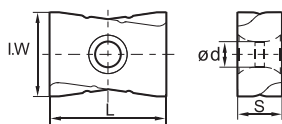
型号 Type	尺寸 Dimensions(mm)					CVD涂层 CVD Coating					PVD涂层 PVD Coating				硬质合金 Cemented carbide						
	L	I.W	S	ød	r	KLT750	KBM720	KBM253	KBM730	KBD125	KBD130	KBG130	KBG202	KBG135	KBG120	KLT330	KLT051	KLT110	KLT120		
APKT150412-M1	16.33	12.7	4.76	5.4	1.2				★					●	○						
APKT150412-QM	16.33	12.7	4.76	5.4	1.2				★					●	○						

★主推牌号 Recommended grade ●可选牌号 Available grade ○按订单生产 Make-to-order



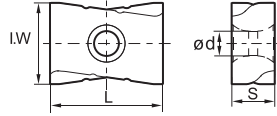
型号 Type	尺寸 Dimensions(mm)				CVD涂层 CVD Coating						PVD涂层 PVD Coating				金陶 Cermet	硬质合金 Cemented carbide				
	L	Ø.C	S	r	KLT750	KBM720	KBM253	KBM730	KBD125	KBD130	KBG130	KBG202	KBG135	KBG120	KLT530	KLT530C	KLT330	KLT051	KLT110	KLT120
HNEX090512-JF	9.16	15.875	5.56	1.2					★											
HNEX090512-M2	9.16	15.875	5.56	1.2					★											
HNEX090512-KR	9.16	15.875	5.56	1.2				○	★											

★主推牌号 Recommended grade ●可选牌号 Available grade ○按订单生产 Make-to-order



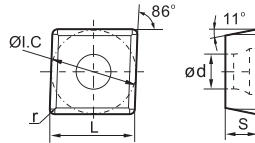
型号 Type	尺寸 Dimensions(mm)				CVD涂层 CVD Coating						PVD涂层 PVD Coating				金陶 Cermet	硬质合金 Cemented carbide				
	L	I.W	S	ød	KLT750	KBM720	KBM253	KBM730	KBD125	KBD130	KBG130	KBG202	KBG135	KBG120	KLT530	KLT530C	KLT330	KLT051	KLT110	KLT120
LNKT2007DN-ZDR	20	17	7.94	4.6				○	○				★							
LNKT2510-ZDR	25	18	9.525	5.5				○	○				★							

★主推牌号 Recommended grade ●可选牌号 Available grade ○按订单生产 Make-to-order



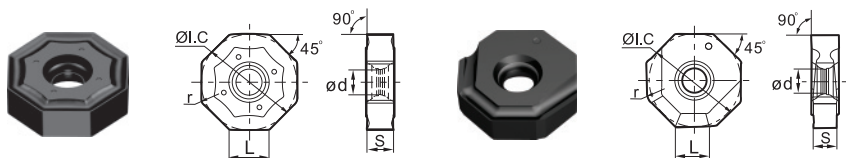
型号 Type	尺寸 Dimensions(mm)				CVD涂层 CVD Coating				PVD涂层 PVD Coating				金陶 Cermet	硬质合金 Cemented carbide						
	L	I.W	S	ød	KLT750	KBM720	KBM253	KBM730	KBD125	KBD130	KBG130	KBG202	KBG135	KBG120	KLT530	KLT530C	KLT330	KLT051	KLT110	KLT120
LNKT1506EN-ZDR	15.875	14	6.35	4.6				○	○				★							

★主推牌号 Recommended grade ●可选牌号 Available grade ○按订单生产 Make-to-order



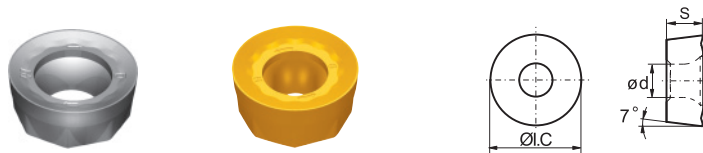
型号 Type	尺寸 Dimensions(mm)					CVD涂层 CVD Coating				PVD涂层 PVD Coating				硬质合金 Cemented carbide					
	ØI.C	L	S	ød	r	KLT750	KBM720	KBM253	KBM730	KBD125	KBD130	KBG130	KBG202	KBG135	KBG120	KLT330	KLT051	KLT110	KLT120
MPHT060304-M2	6.35	6.35	3.18	2.8	0.4									★					
MPHT080305-M2	8.3	8.3	3.18	3.4	0.5									★					
MPHT120408-M2	12.7	12.7	4.76	5.56	0.8									★					

★主推牌号 Recommended grade ●可选牌号 Available grade ○按订单生产 Make-to-order



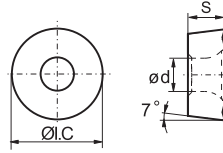
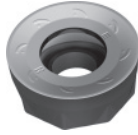
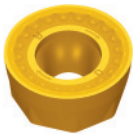
型号 Type	尺寸 Dimensions(mm)					CVD涂层 CVD Coating					PVD涂层 PVD Coating			金陶 Cermet		硬质合金 Cemented carbide						
	L	ØI.C	S	ød	r	KLT750	KBM720	KBM253	KBM730	KBD125	KBD130	KBG130	KBG202	KBG135	KBG120	KLT530	KLT530C	KLT330	KLT051	KLT110	KLT120	
ONHU060408-MF	6.58	15.875	4.76	4.4	0.83					★		★										
ONHU08T508-MF	8.37	20.2	5.77	5.3	0.83					★		★										
ONHU060408-M1	6.58	15.875	4.76	4.4	0.83			★		★												
ONHU08T508-M1	8.37	20.2	5.79	5.3	0.83			★		★												
ONHU08T508-X	6.9	20.5	6.00	5.3	0.80					★		★										

★主推牌号 Recommended grade ●可选牌号 Available grade ○按订单生产 Make-to-order



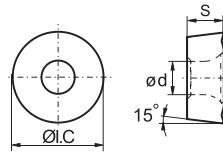
型号 Type	尺寸 Dimensions(mm)			CVD涂层 CVD Coating					PVD涂层 PVD Coating			金陶 Cermet		硬质合金 Cemented carbide							
	ØI.C	S	ød	KLT750	KBM720	KBM253	KBM730	KBD125	KBD130	KBG130	KBG202	KBG131	KBG135	KBG120	KLT530	KLT530C	KLT330	KLT051	KLT110	KLT120	
RCKT10T3MO-M2	10.0	3.97	4.4	●							●	★									
RCKT1204MO-M2	12.0	4.76	4.0	●	●		●	○			●	★	★								

★主推牌号 Recommended grade ●可选牌号 Available grade ○按订单生产 Make-to-order



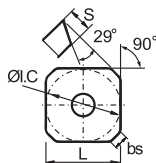
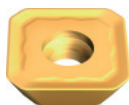
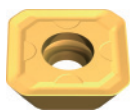
型号 Type	尺寸 Dimensions(mm)			CVD涂层 CVD Coating					PVD涂层 PVD Coating				金陶 Cermet		硬质合金 Cemented carbide						
	Ø1.C	S	ød	KLT750	KBM720	KBM253	KBM730	KBD125	KBD130	KBG130	KBG202	KBG131	KBG135	KBG120	KLT530	KLT530C	KLT330	KLT051	KLT110	KLT120	
RCKT1204MO-KR	12.0	4.76	4.0	○	○		○				●	★									
RCKT1606MO-KR	16.0	6.35	5.56	●			●		○		●	★									
RCKT2006MO-KR	20.0	6.35	6.55	●			●		○	○	★	●									
RCKT1204MO-BR	12.0	4.76	4.0				★														
RCKT1606MO-BR	16.0	6.35	5.56				★														
RCKT2006MO-BR	20.0	6.35	6.55				★														

★主推牌号 Recommended grade ●可选牌号 Available grade ○按订单生产 Make-to-order



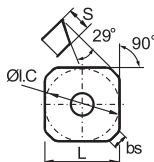
型号 Type	尺寸 Dimensions(mm)			CVD涂层 CVD Coating					PVD涂层 PVD Coating				金陶 Cermet		硬质合金 Cemented carbide						
	Ø1.C	S	ød	KLT750	KBM720	KBM253	KBM730	KBD125	KBD130	KBG130	KBG202	KBG135	KBG120	KLT530	KLT530C	KLT330	KLT051	KLT110	KLT120		
RDKW0803MO	8	3.18	3.4	○			○				●	○									
RDKW10T3MO	10	3.97	4.4	○			●				●										
RDKW1204MO	12	4.76	4.4	●	●		●				●	●									
RDKW1605MO	16	5.56	5.5	○			●				○	○									
RDKW2006MO	20	6.35	6.5	○			○														

★主推牌号 Recommended grade ●可选牌号 Available grade ○按订单生产 Make-to-order



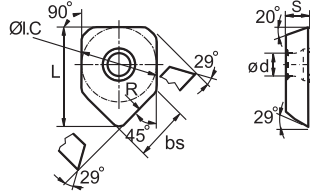
型号 Type	尺寸 Dimensions(mm)					CVD涂层 CVD Coating					PVD涂层 PVD Coating			金陶 Cemet		硬质合金 Cemented carbide						
	L	ØI.C	S	ød	bs	KLT750	KBM720	KBM253	KBM730	KBD125	KBD130	KBG130	KBG202	KBG135	KBG120	KLT530	KLT530C	KLT330	KLT051	KLT110	KLT120	
SEET12T3-JF	13.4	13.4	3.97	4.1	2.55	●	●					★	○									
SEET12T3-XF	13.4	13.4	3.97	4.1	2.55				○			★	○	○								
SEET12T3-BF	13.4	13.4	3.97	4.1	2.55								○	○								
SEET12T3-M2	13.4	13.4	3.97	4.1	2.55	●	●		○			★	★									
SEET12T3-XM	13.4	13.4	3.97	4.1	2.55				★			★	○									
SEET12T3-BM	13.4	13.4	3.97	4.1	2.55		●		●				○	★								

★主推牌号 Recommended grade ●可选牌号 Available grade ○按订单生产 Make-to-order



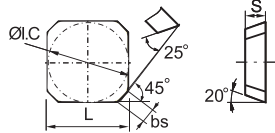
型号 Type	尺寸 Dimensions(mm)					CVD涂层 CVD Coating					PVD涂层 PVD Coating			金陶 Cemet		硬质合金 Cemented carbide						
	L	ØI.C	S	ød	bs	KLT750	KBM720	KBM253	KBM730	KBD125	KBD130	KBG130	KBG202	KBG135	KBG120	KLT530	KLT530C	KLT330	KLT051	KLT110	KLT120	
SEET12T3-KR	13.4	13.4	3.97	4.1	2.55	●			●				★	★								
SEET12T3-KR	13.4	13.4	3.97	4.1	2.55	●				★				★								
SEET12T3-LU	13.4	13.4	3.97	4.1	2.55															○	★	

★主推牌号 Recommended grade ●可选牌号 Available grade ○按订单生产 Make-to-order



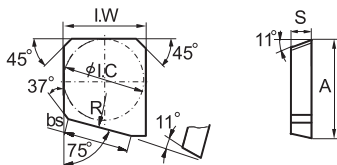
型号 Type	尺寸 Dimensions(mm)						CVD涂层 CVD Coating					PVD涂层 PVD Coating			金陶 Cermet	硬质合金 Cemented carbide							
	L	ØI.C	S	ød	bs	R	KLT750	KBM720	KBM253	KBM730	KBD125	KBD130	KBG130	KBG202	KBG135	KBG120	KLT530	KLT530C	KLT330	KLT051	KLT110	KLT120	
SEET12T3-X	17.82	13.4	3.97	4.1	9.46	500		●			★			★		★							

★主推牌号 Recommended grade ●可选牌号 Available grade ○按订单生产 Make-to-order



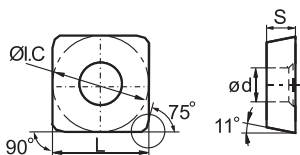
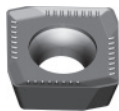
型号 Type	尺寸 Dimensions(mm)				CVD涂层 CVD Coating						PVD涂层 PVD Coating			金陶 Cermet	硬质合金 Cemented carbide							
	L	ØI.C	S	bs	KLT750	KBM720	KBM253	KBM730	KBD125	KBD130	KBG130	KBG202	KBG135	KBG120	KLT530	KLT530C	KLT330	KLT051	KLT110	KLT120		
SEEN1203AFTN	12.7	12.7	3.18	1.8								○			●							
SEKN1203AFFN	12.7	12.7	3.18	1.8							★											
SEKN1203AFN	12.7	12.7	3.18	1.8	●							○					●					○
SEKN1203AFTN	12.7	12.7	3.18	1.8	●	●		●				★	○				●					●
SEKN1504AFN	15.875	15.875	4.76	1.6	●	●																●
SEKN1504AFTN	15.875	15.875	4.76	1.6	○	●		●					○				●					●
SEKR1203AFN	12.7	12.7	3.18	1.8	●							○	○									
SEKR1504AFN	15.875	15.875	4.76	1.6						★			★				●					

★主推牌号 Recommended grade ●可选牌号 Available grade ○按订单生产 Make-to-order



型号 Type	尺寸 Dimensions(mm)						CVD涂层 CVD Coating					PVD涂层 PVD Coating			硬质合金 Cemented carbide					
	A	ØI.C	I.W	S	bs	R	KLT750	KBM720	KBM253	KBM730	KBD125	KBD130	KBG130	KBG202	KBG135	KBG120	KLT330	KLT051	KLT110	KLT120
SPEX1203EDL-1	15	12.7	12.7	3.18	10	500														●
SPEX1203EDR-1	15	12.7	12.7	3.18	10	500														●
SPEX1504EDL-1	18.2	15.875	15.875	4.76	10	500											○			●
SPEX1504EDR-1	18.2	15.875	15.875	4.76	10	500											○			●

★主推牌号 Recommended grade ●可选牌号 Available grade ○按订单生产 Make-to-order



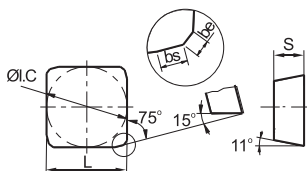
型号 Type	尺寸 Dimensions(mm)				CVD涂层 CVD Coating					PVD涂层 PVD Coating			金陶 Cermet	硬质合金 Cemented carbide						
	L	ØI.C	S	ød	KLT750	KBM720	KBM253	KBM730	KBD125	KBD130	KBG130	KBG202	KBG135	KBG120	KLT530	KLT530C	KLT330	KLT051	KLT110	KLT120
SPKW1204EDFR	12.7	12.7	4.76	5.56								○								
SPKW1204EDSR	12.7	12.7	4.76	5.56								○								
SPKT1204EDR	12.7	12.7	4.76	5.56								★								

★主推牌号 Recommended grade ●可选牌号 Available grade ○按订单生产 Make-to-order



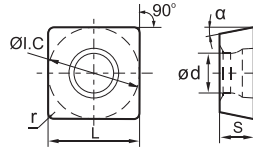
型号 Type	尺寸 Dimensions(mm)					CVD涂层 CVD Coating					PVD涂层 PVD Coating				金陶 Cermet		硬质合金 Cemented carbide					
	L	ØI.C	S	be	bs	KLT750	KBM720	KBM253	KBM730	KBD125	KBD130	KBG130	KBG202	KBG135	KBG120	KLT530	KLT530C	KLT330	KLT051	KLT110	KLT120	
SPKN1203EDER	12.7	12.7	3.18	1	1.4							○										
SPKN1203EDEL	12.7	12.7	3.18	1	1.4							○										
SPKN1203EDFR	12.7	12.7	3.18	1	1.4						★	○										●
SPKN1203EDFL	12.7	12.7	3.18	1	1.4							○	○									○
SPKN1203EDSKR	12.7	12.7	3.18	1	1.4									○				○				
SPKN1203EDSKL	12.7	12.7	3.18	1	1.4									○				○				
SPKN1203EDTKR	12.7	12.7	3.18	1	1.4	●			●			○	★					●				○
SPKN1203EDTKL	12.7	12.7	3.18	1	1.4							○	○					○				○
SPKN1203EDS31R	12.7	12.7	3.18	1	1.4									○				○				
SPKN1203EDS31L	12.7	12.7	3.18	1	1.4									○				○				
SPKN1203EDT31R	12.7	12.7	3.18	1	1.4	●			●			○	★					●				○
SPKN1203EDT31L	12.7	12.7	3.18	1	1.4							○	○					○				○
SPKR1203EDR-JM	12.7	12.7	3.18	1	1.4		●					★	★					●				●
SPKR1203EDL-JM	12.7	12.7	3.18	1	1.4		●					★	★					●				●

★主推牌号 Recommended grade ●可选牌号 Available grade ○按订单生产 Make-to-order



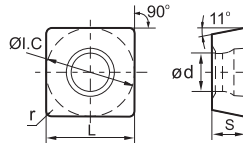
型号 Type	尺寸 Dimensions(mm)					CVD涂层 CVD Coating						PVD涂层 PVD Coating				金陶 Cermet		硬质合金 Cemented carbide				
	L	ØI.C	S	be	bs	KLT750	KBM720	KBM253	KBM730	KBD125	KBD130	KBG130	KBG202	KBG135	KBG120	KLT530	KLT530C	KLT330	KLT051	KLT110	KLT120	
SPKN1504EDER	15.875	15.875	4.76	1	1.4								○									
SPKN1504EDEL	15.875	15.875	4.76	1	1.4								○									
SPKN1504EDFR	15.875	15.875	4.76	1	1.4							○	○									○
SPKN1504EDFL	15.875	15.875	4.76	1	1.4							○	○									○
SPKN1504EDSKR	15.875	15.875	4.76	1	1.4									○				○				
SPKN1504EDSKL	15.875	15.875	4.76	1	1.4									○				○				
SPKN1504EDTKR	15.875	15.875	4.76	1	1.4	●							★	○				●				●
SPKN1504EDTKL	15.875	15.875	4.76	1	1.4								○	○				○				●
SPKN1504EDS32R	15.875	15.875	4.76	1	1.4									○				○				
SPKN1504EDS32L	15.875	15.875	4.76	1	1.4									○				○				
SPKN1504EDT32R	15.875	15.875	4.76	1	1.4	●							★	○				●				●
SPKN1504EDT32L	15.875	15.875	4.76	1	1.4								○	○				○				●
SPKR1504EDR-JM	15.875	15.875	4.76	1	1.4		●						★	★				●				●
SPKR1504EDL-JM	15.875	15.875	4.76	1	1.4		●						★	★				●				●

★主推牌号 Recommended grade ●可选牌号 Available grade ○按订单生产 Make-to-order



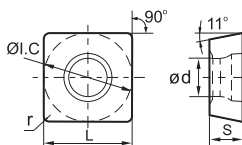
型号 Type	尺寸 Dimensions(mm)						CVD涂层 CVD Coating					PVD涂层 PVD Coating			硬质合金 Cemented carbide						
	r	L	ØI.C	S	ød	α	KLT750	KBM720	KBM253	KBM730	KBD125	KBD130	KBG130	KBG202	KBG135	KBG120	KLT330	KLT051	KLT110	KLT120	
SPMT060304	0.4	6.35	6.35	3.18	2.8	11°	○								○						
SDMT090308	0.8	9.525	9.525	3.18	4.4	15°	○								○						
SPMT120408	0.8	12.7	12.70	4.76	5.5	11°	●								★						

★主推牌号 Recommended grade ●可选牌号 Available grade ○按订单生产 Make-to-order



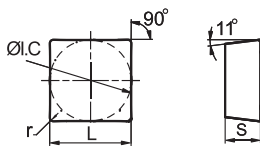
型号 Type	尺寸 Dimensions(mm)					CVD涂层 CVD Coating					PVD涂层 PVD Coating			硬质合金 Cemented carbide						
	L	ØI.C	S	ød	r	KLT750	KBM720	KBM253	KBM730	KBD125	KBD130	KBG130	KBG202	KBG135	KBG120	KLT330	KLT051	KLT110	KLT120	
SPMT120408-M1	12.7	12.7	4.76	5.5	0.8			★						●	○					
SPMT120408-QM	12.7	12.7	4.76	5.5	0.8			★						●	○					

★主推牌号 Recommended grade ●可选牌号 Available grade ○按订单生产 Make-to-order



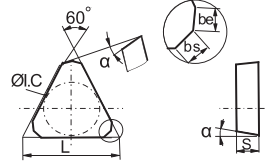
型号 Type	尺寸 Dimensions(mm)					CVD涂层 CVD Coating						PVD涂层 PVD Coating			硬质合金 Cemented carbide				
	Ø1.C	L	r	S	ød	KLT750	KBM720	KBM253	KBM730	KBD125	KBD130	KBG130	KBG202	KBG135	KBG120	KLT330	KLTO51	KLTI10	KLTI20
SPMT120408	12.7	12.7	0.8	4.76	5.5	●	●		●					★		○			

★主推牌号 Recommended grade ●可选牌号 Available grade ○按订单生产 Make-to-order



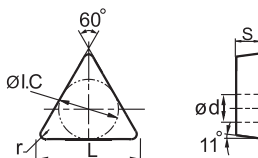
型号 Type	尺寸 Dimensions(mm)				CVD涂层 CVD Coating						PVD涂层 PVD Coating			金陶 Cermet	硬质合金 Cemented carbide					
	L	Ø1.C	s	r	KLT750	KBM720	KBM253	KBM730	KBD125	KBD130	KBG130	KBG202	KBG135	KBG120	KLT530	KLT530C	KLT330	KLTO51	KLTI10	KLTI20
SPUN090304	9.525	9.525	3.18	0.4														○		
SPUN090308	9.525	9.525	3.18	0.8													○		○	
SPUN120304	12.7	12.7	3.18	0.4										○			○			○
SPUN120308	12.7	12.7	3.18	0.8		○		○									●		○	○
SPUN120312	12.7	12.7	3.18	1.2													○			
SPUN150408	15.875	15.875	4.76	0.8													○			○
SPUN150412	15.875	15.875	4.76	1.2													○		○	○
SPUN190408	19.05	19.05	4.76	0.8													○		○	
SPUN190412	19.05	19.05	4.76	1.2													○			
SPUN190416	19.05	19.05	4.76	1.6													○			

★主推牌号 Recommended grade ●可选牌号 Available grade ○按订单生产 Make-to-order



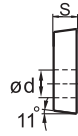
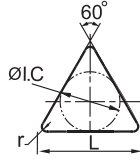
型号 Type	尺寸 Dimensions(mm)						CVD涂层 CVD Coating						PVD涂层 PVD Coating				硬质合金 Cemented carbide				
	L	Ø1.C	S	be	bs	α	KLT750	KBM720	KBM253	KBM730	KBD125	KBD130	KBG130	KBG202	KBG135	KBG120	KLT330	KLT051	KLT110	KLT120	
TPKN2204PDFR	22	12.7	4.76	1.4	0.7	11°							○								○
TPKN2204PDFL	22	12.7	4.76	1.4	0.7	11°							○								○
TPKN2204PDR	22	12.7	4.76	1.4	0.7	11°	●		●				★	★	★		●	○	○	●	
TPKN2204PDL	22	12.7	4.76	1.4	0.7	11°											●				
TPKN2204PDTR	22	12.7	4.76	1.4	0.7	11°	●										●				
TPKN2204PDTL	22	12.7	4.76	1.4	0.7	11°	○										○				

★主推牌号 Recommended grade ●可选牌号 Available grade ○按订单生产 Make-to-order



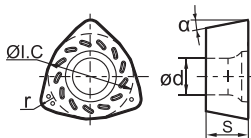
型号 Type	尺寸 Dimensions(mm)				CVD涂层 CVD Coating					PVD涂层 PVD Coating				金陶 Cermet		硬质合金 Cemented carbide					
	L	Ø1.C	s	r	KLT750	KBM720	KBM253	KBM730	KBD125	KBD130	KBG130	KBG202	KBG135	KBG120	KLT530	KLT530C	KLT330	KLT051	KLT110	KLT120	
TPGN090204	9.6	5.56	2.38	0.4																○	
TPGN090208	9.6	5.56	2.38	0.8														○			
TPGN110204	11	6.35	2.38	0.4																○	
TPGN110304	11	6.35	3.18	0.4														○	●	○	
TPGN110308	11	6.35	3.18	0.8														○			○
TPGN160304	16.5	9.525	3.18	0.4													●	○	○		
TPGN160308	16.5	9.525	3.18	0.8														○		●	
TPGN160312	16.5	9.525	3.18	1.2																	○
TPGN160316	16.5	9.525	3.18	1.6																	○
TPGN220308	22	12.7	4.76	0.8																○	
TPGN220404	22	12.7	4.76	0.4																○	
TPGN220408	22	12.7	4.76	0.8													○				○
TPGN220412	22	12.7	4.76	1.2																	○
TPGN270408	27.5	15.875	4.76	0.8																	○

★主推牌号 Recommended grade ●可选牌号 Available grade ○按订单生产 Make-to-order



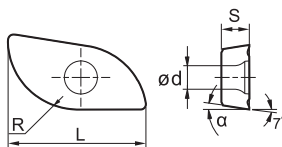
型号 Type	尺寸 Dimensions(mm)				CVD涂层 CVD Coating						PVD涂层 PVD Coating				陶瓷 Cermet		硬质合金 Cemented carbide			
	L	ØI.C	s	r	KLT750	KBM720	KBM253	KBM730	KBD125	KBD130	KBG130	KBG202	KBG135	KBG120	KLT530	KLT530C	KLT330	KLT051	KLT110	KLT120
TPUN110208	11	6.35	2.38	0.8	○												○			
TPUN110304	11	6.35	3.18	0.4													○			
TPUN110308	11	6.35	3.18	0.8	○												●		○	○
TPUN160304	16.5	9.525	3.18	0.4		○											○		○	○
TPUN160308	16.5	9.525	3.18	0.8		○		○									●		●	○
TPUN160312	16.5	9.525	3.18	1.2		○											●			
TPUN160408	16.5	9.525	4.76	0.8													○			○
TPUN160412	16.5	9.525	4.76	1.2													○			○
TPUN220404	22	12.7	4.76	0.4																○
TPUN220408	22	12.7	4.76	0.8		●	○										●		○	
TPUN220412	22	12.7	4.76	1.2				○									●			○
TPUN220416	22	12.7	4.76	1.6																○
TPMR090204	9.6	5.56	2.38	0.4		○														
TPMR110304	11	6.35	3.18	0.4		●									○					
TPMR110308	11	6.35	3.18	0.8		○									○					
TPMR160304	16.5	9.525	3.18	0.4		●		○							○		○			
TPMR160308	16.5	9.525	3.18	0.8		●		●									○			○
TPMR160312	16.5	9.525	3.18	1.2				○												
TPMR220412	22	12.7	4.76	1.2				○												
TPMR330916	33	19.05	9.52	1.6									★							

★主推牌号 Recommended grade ●可选牌号 Available grade ○按订单生产 Make-to-order



型号 Type	尺寸 Dimensions(mm)					CVD涂层 CVD Coating					PVD涂层 PVD Coating			硬质合金 Cemented carbide					
	ØI.C	r	S	ød	α	KLT750	KBM720	KBM253	KBM730	KBD125	KBD130	KBG130	KBG202	KBG135	KBG120	KLT330	KLT051	KLT110	KLT120
WPGT050315ZSR	7.94	1.5	3.5	4.0	11°				●										
WPGT060415ZSR	9.525	1.5	4.2	4.4	11°				●										
WPGT080615ZSR	12.85	1.5	6.35	5.5	11°				●										
WPGT090725ZSR	15	2.5	7	5.5	11°				●										

★主推牌号 Recommended grade ●可选牌号 Available grade ○按订单生产 Make-to-order



型号 Type	尺寸 Dimensions(mm)					CVD涂层 CVD Coating					PVD涂层 PVD Coating			硬质合金 Cemented carbide					
	R	ød	S	α	L	KLT750	KBM720	KBM253	KBM730	KBD125	KBD130	KBG130	KBG202	KBG135	KBG120	KLT330	KLT051	KLT110	KLT120
XPHT16R0803-JM	8	3.1	3.18	9°	16								★						
XPHT20R10T3-JM	10	4.0	3.97	9°	20								★						
XPHT25R1204-JM	12.5	4.7	4.76	9°	25								★						
XPHT30R1506-JM	15	5.8	6.35	11°	30								★						
XPHT32R1606-JM	16	5.8	6.35	9°	32								★						
XPHT40R2007-JM	20	6.7	7.94	9°	40								★						
XPHT50R2507-JM	25	9.2	7.94	9°	50								★						

★主推牌号 Recommended grade ●可选牌号 Available grade ○按订单生产 Make-to-order